

# Redefine the user experience

Materials, accessories, and user interface devices for KONE elevators

# Contents

Introduction .....	3
Classic range .....	4
Refined range .....	8
Elegant range .....	11
Mix and match .....	16
Solutions for accessibility .....	17
Solutions for durability .....	18
Solutions for scenic elevators .....	19
KONE Digital Experience Cars .....	20
KONE Lane .....	22
KONE Destination .....	24





# Redefine the user experience

The interior of an elevator significantly contributes to the overall architectural ambiance of a building. Same way as any other space, an elevator elevates the experience of your building with user friendly finishing, good lighting, harmonious soundscape and even digital media content.

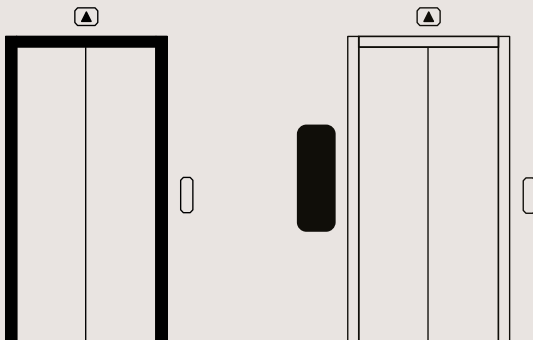
You can choose one of our predefined interior ranges or mix and match between ranges to create your own preferred combination.

## Availability

KONE MonoSpace DX	Classic, Refined, Elegant
KONE MiniSpace DX	Classic, Refined, Elegant
KONE Transys DX	Classic
KONE Essentials DX	Classic

Narrow Door Frames

Wall Mounted Maintenance Access Panel



### Classic

Making everyday smoother



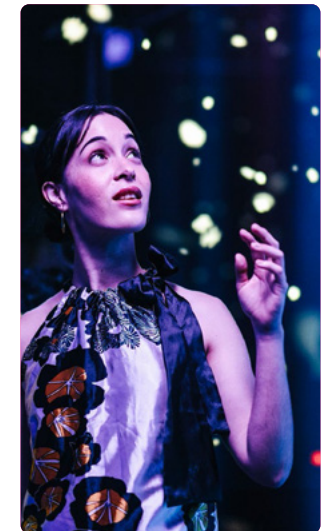
### Refined

Pleasant continuity through spaces



### Elegant

Authentic and true interiors



### Digital experience

Journey of multi-sensory experiences

# Classic

Making everyday  
smoother

A curated selection of interiors with practical materials and accessories to enhance everyday life and deliver excellent value for residential and public buildings.





## Walls

### Brushed stainless steel



**ST4/ST43**  
Silver

**ST4LH/ ST43LH**  
Silver long hairline

**A**  
316 Grade

**F**  
304

### Painted steel



**PP10FT**  
Pure White,  
fine textured

**PP18FT**  
Linen Brown,  
fine textured

**PP20FT**  
Wool Grey,  
fine textured

**METP1FT**  
Champagne,  
fine textured

**METP7FT**  
Metallic Black,  
fine textured

### Metallic Painted steel

## Doors and Frames

### Brushed stainless steel



**ST4/ST43**  
Silver

**ST4LH/ST43LH**  
Silver long  
hairline

### Metallic painted steel



**METP1FT**  
Champagne,  
fine textured

**METP7FT**  
Metallic Black,  
fine textured

### Painted steel



**PP10FT**  
Pure White,  
fine textured

**PP18FT**  
Linen Brown,  
fine textured

**PP20FT**  
Wool Grey,  
fine textured

## Floors

### Single Colour PVC



**D6**  
Light Brown

**D25**  
Rocky Grey

**D32**  
Nordic White

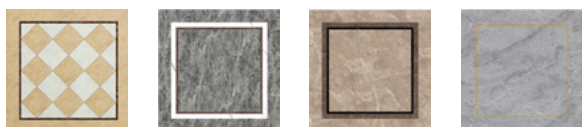
**D33**  
Sandstone  
Brown

**D34**  
Laurent Black

**RC7**  
Coin pattern

### Rubber

### Pattern PVC



**DG07**

**DG15**  
Himalayan Grey

**DG16**  
Warm Sand

**DG17**  
Grey Sand

## Wall Mounted MAP

### Brushed stainless steel

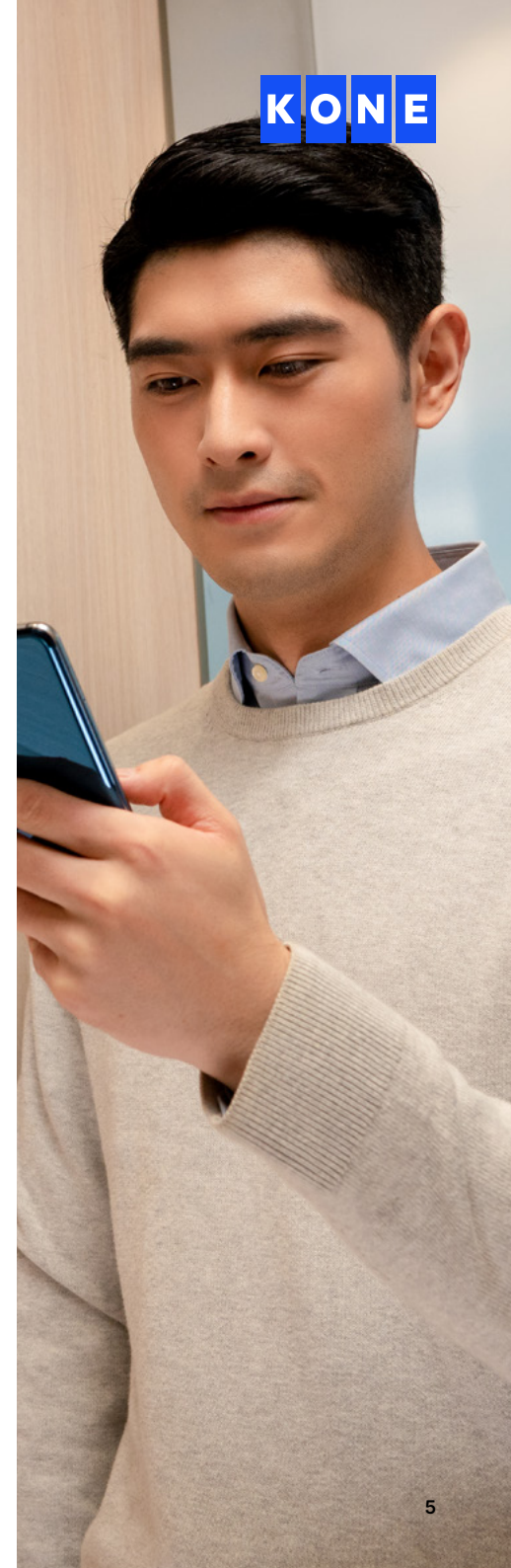


**ST4/ST43**  
Silver, AISI304

### Painted steel



**PP10FT**  
Pure White,  
fine textured



## Ceilings



**CL71**  
Lighting: LED strip  
Finishing: ST4



**CL80**  
Lighting: LED spot  
Finishing: ST4, PP10FT



**CL91**  
Lighting: LED tube  
Finishing: ST4, PP10FT



**CL12**  
Lighting: LED spot  
Finishing: ST4, PP10FT

## Handrails



**HR61**  
silver brushed  
stainless steel

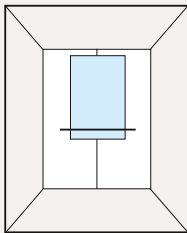


**HR64**  
Silver brushed  
stainless steel

### UPGRADE OPTION

## Mirrors (Rear)

### Standard mirror



**MR1**  
Partial width, partial height

## Skirting



**ST4 / ST43**  
Silver brushed  
stainless steel



## Signalisation

### KDS220

#### Car operating panel (COP)



Full Height COP

##### Faceplate finishing



Silver (ST4AFP)  
with anti-fingerprint  
coating

##### Mounting types

**Flush mounted:** Full-height COP

##### Display

7-segment, dot-matrix, STN LCD  
White LED

##### Landing devices



Duplex landing  
call indicator



Simplex landing  
call indicator

##### Mounting types

**Surface mounted:** All landing devices

##### Buttons



Brushed Stainless  
steel with Braille and  
Tactile (AS 1735.12  
Compliant)

### KDS330

#### Car operating panel (COP)



Full Height COP

##### Faceplate finishing



Silver (ST4AFP)  
with anti-fingerprint  
coating

##### UPGRADE OPTION



Silver long hairline  
(ST4LH)



Silver Mirror (MP1) U

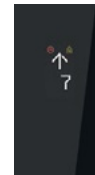
##### Mounting types

**COP:** Flush

##### COP Display



5.7" scrolling

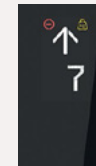


5.7" LCD dot  
matrix

##### UPGRADE OPTION



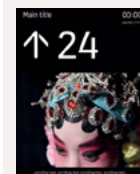
7" full graphic



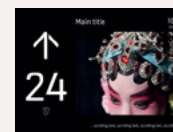
9" LCD U

##### UPGRADE OPTION

##### MediaScreen 100



10.4" TFT LCD  
12.1" TFT LCD  
15" TFT LCD



10.4" TFT LCD  
12.1" TFT LCD  
15" TFT LCD

## Landing user interface

#### Landing devices



Duplex landing  
call indicator



Simplex landing  
call indicator



Landing Call  
Station

##### Buttons

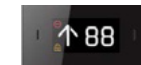


Brushed Stainless  
steel with Braille and  
Tactile (AS 1735.12  
Compliant)

#### Hall lanterns and indicators



Hall Lantern



Hall indicator

##### Mounting types

Surface mounted or Flush Mounted for  
all landing user interface



# Refined

Pleasant continuity  
through spaces

Durable materials and accessories for  
residential, retail, or office buildings, with a  
diverse range of elements that can be easily  
interchanged to create a functional interior.





## Walls

### Brushed stainless steel



**ST4**  
Silver

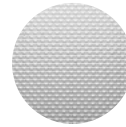


**ST4LH**  
Silver long hairline

### Textured stainless steel



**K**  
Scottish Quad



**TS1**  
Flemish Linen,  
Silver

### Mirror-polished stainless steel



**MP1**  
Silver Quad

### Metallic printed steel



**MS1**  
Metallic  
Champagne



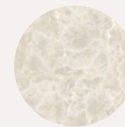
**MS2**  
Metallic  
Coffee



**MS3**  
Metallic  
Grey

### UPGRADE OPTION

### Pattern printed steel



**RS1**  
White rock  
pattern printed  
steel



**RS2**  
Grey rock  
pattern printed  
steel

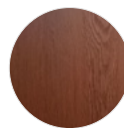
### Single Colour PVC



**WS1**  
Light



**WS2**  
Warm



**WS3**  
Dark



**WS4**  
Black Oak



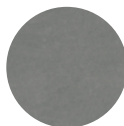
**WS5**  
White Oak

## Floors

### Marble tile



**MT1**  
Elegant Black



**MT2**  
Frosty Grey



**MT3**  
White Marble

### Rubber



**RC7**  
Coin pattern

## Doors and Frames

### Brushed stainless steel



**K**  
Scottish

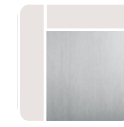


**TS1**  
Flemish Linen,  
Silver



**MP1**  
Silver

### Stainless steel



**ST4/ST43**  
Silver



**ST4LH/ST34LH**  
Silver long  
hairline

## Wall Mounted MAP

### Brushed stainless steel



**ST4**  
Silver

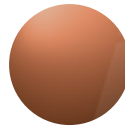


**ST2**  
Gold



**MP1**  
Silver

### Mirror stainless steel



**MP4**  
Copper

## Ceilings



**CL80**  
Lighting: LED spot  
Finishing: ST4, PP10FT



**CL82**  
Lighting: LED spot  
Finishing: ST4, ST43, PP10FT, MP1



**CL91**  
Lighting: LED spot  
Finishing: ST4, PP10FT



**CL151**  
Lighting: LED panel  
Finishing: ST4, MP2



**CL109**  
Lighting: LED PCB  
Finishing: ST4, PP10FT



**CL181**  
Lighting: LED stripe, wall washer lighting  
Finishing: MP1, MP2

## Handrails



**HR61**  
Silver brushed stainless steel



**HR64**  
Silver brushed stainless steel

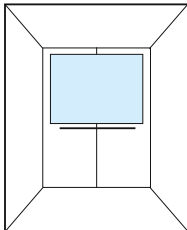
## Skirting



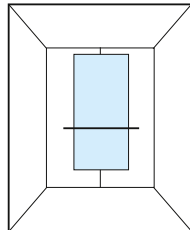
**ST4 / ST43**  
Silver brushed stainless steel

## Mirrors

### Standard mirror



**MR1**  
Full width, partial height



**MR1**  
Partial width, Mid height

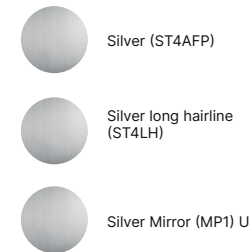
## KDS330

### Car operating panel (COP)



Full Height COP

### Faceplate finishing



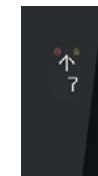
### Mounting types

COP: Flush

### COP Display



5.7" scrolling

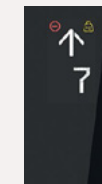


5.7" LCD dot matrix

### UPGRADE OPTION



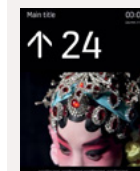
7" full graphic



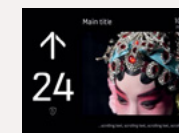
9" LCD U

### UPGRADE OPTION

### MediaScreen 100



10.4" TFT LCD  
12.1" TFT LCD  
15" TFT LCD



10.4" TFT LCD  
12.1" TFT LCD  
15" TFT LCD

## Landing user interface

### Landing devices



Duplex landing call indicator



Simplex landing call indicator



Landing Call Station

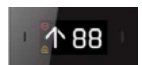


Brushed Stainless steel with Braille and Tactile (AS 1735.12 Compliant)

### Hall lanterns and indicators



Hall Lantern



Hall indicator

### Mounting types

Surface mounted or Flush Mounted for all landing user interface



A photograph of a modern, elegant elevator lobby. The walls are made of large, light-colored marble tiles. A woman in a dark suit and high heels stands in the foreground, holding a folder, looking towards an open elevator. The elevator has a dark interior and a sign above it with an upward arrow and the letter 'G'. In the background, other elevators and a man standing near a large potted plant are visible. The floor is made of dark, polished tiles.

# Elegant

## Authentic and true interiors

Elegant materials and versatile accessories ideal for sophisticated and environmentally conscious spaces including premium high-rise buildings, corporate offices, and high-end residential buildings. These solutions inspire architects, interior designers, investors, and developers alike.



## Walls

### Brushed stainless steel



**ST2**  
Gold

**ST5**  
Copper

**ST6**  
Bronze

**ST7**  
Carbon Black

**ST8**  
Champagne Gold

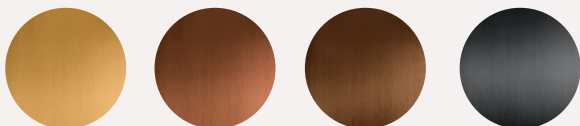
**MP4**  
Copper

**MP5**  
Carbon Black

### Mirror-polished stainless steel

#### UPGRADE OPTION

#### Brushed stainless steel Anti-fingerprint



**ST2AFP**  
Gold with  
anti-fingerprint  
coating

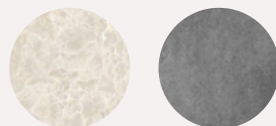
**ST5AFP**  
Copper with  
anti-fingerprint  
coating

**ST6AFP**  
Bronze with  
anti-fingerprint  
coating

**CB**  
Carbon Black with  
anti-fingerprint  
coating

#### UPGRADE OPTION

#### Pattern printed steel

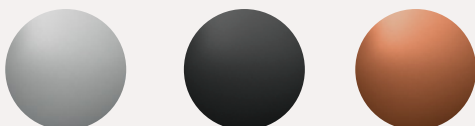


**RS1**  
White rock  
pattern printed  
steel

**RS2**  
Grey rock  
pattern printed  
steel

#### UPGRADE OPTION

#### Brushed stainless steel Anti-fingerprint



**MP6AFP**  
Silver with  
anti-fingerprint  
coating

**MP8AFP**  
Carbon Black with  
anti-fingerprint  
coating

**MP9AFP**  
Copper with  
anti-fingerprint  
coating





## Doors and Frames

### Brushed stainless steel



**ST2**  
Gold

**ST5**  
Copper

**ST6**  
Bronze

**ST7**  
Carbon Black

**ST8**  
Champagne Gold

### Mirror-polished stainless steel



**MP4**  
Copper

**MP5**  
Carbon Black

#### UPGRADE OPTION

### Satin stainless steel



**MP6AFP**  
Silver with  
anti-fingerprint  
coating

**MP8AFP**  
Carbon Black with  
anti-fingerprint  
coating

**MP9AFP**  
Copper with  
anti-fingerprint  
coating

#### UPGRADE OPTION

### Brushed stainless steel Anti-Fingerprint



**ST2AFP**  
Gold with  
anti-fingerprint  
coating

**ST5AFP**  
Copper with  
anti-fingerprint  
coating

**ST6AFP**  
Bronze with  
anti-fingerprint  
coating

**CB**  
Carbon Black with  
anti-fingerprint  
coating

## Wall Mounted MAP

### Brushed stainless steel



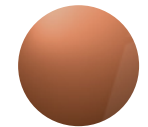
**ST4**  
Silver



**ST2**  
Gold



**MP1**  
Silver



**MP4**  
Copper

### Mirror stainless steel

## Floors

### Real granite



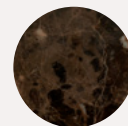
**M3R / M3H**  
Black Golden  
Sand stone  
Elegant Black

#### UPGRADE OPTION

### Real marble



**N1R**  
Castle Grey  
stone



**N2R**  
Dark Emperador  
stone

## Ceilings

### Direct lighting



**CL72**  
Lighting: LED tube  
Finishing: ST4, PP10FT



**CL82**  
Lighting: LED spot  
Finishing: ST4, ST43, PP10FT, MP1



**CL80**  
Lighting: LED spot  
Finishing: ST4, ST43, PP10FT, MP1



**CL91**  
Lighting: LED strip  
Finishing: MP1

### Indirect lighting



**CL151**  
Lighting: LED panel  
Finishing: ST4, MP2



**CL196**  
Direct lighting: LED spot  
Indirect lighting: LED strip  
Finishing: ST4, PP10FT, MP1



**CL109**  
Lighting: LED PCB  
Finishing: ST4, PP10FT



**CL181**  
Lighting: LED strip, wall washer lighting  
Finishing: MP1, MP2

## Skirting



**ST2**  
Gold



**ST5**  
Copper



**ST6**  
Bronze



**ST8**  
Champagne Gold



**ST7**  
Carbon Black

## Handrails

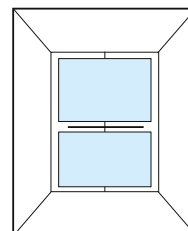


**HR61**  
Brushed stainless steel in gold, copper, bronze, Carbon Black, Champagne Gold, or P70 anti-bacteria finish



**HR64**  
Brushed stainless steel in gold, copper, bronze, Carbon Black, Champagne Gold, or P70 anti-bacteria finish

## Standard mirror



**MR1**  
Full width, partial height







## KDS330

### Car operating panel (COP)



Full Height COP

#### Faceplate finishing



Champagne (ST8)



Bronze (ST6AFP)



Silver Mirror (MP1)



Gold (ST2AFP)



Copper (ST5AFP)

#### UPGRADE OPTION



Silver (MP6AFP) U



Carbon Black (MP8AFP) U



Copper (MP9AFP) U

#### Mounting types

COP: Flush

#### COP Display



5.7" scrolling

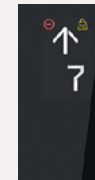


5.7" LCD dot matrix

#### UPGRADE OPTION



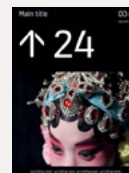
7" full graphic



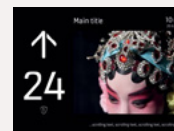
9" LCD U

#### UPGRADE OPTION

#### MediaScreen 100



10.4" TFT LCD  
12.1" TFT LCD  
15" TFT LCD



10.4" TFT LCD  
12.1" TFT LCD  
15" TFT LCD

## Landing User interface

### Landing devices



Duplex landing call indicator



Simplex landing call indicator



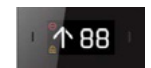
Landing Call Station



Brushed Stainless steel with Braille and Tactile (AS 1735.12 Compliant)

#### Buttons

### Hall lanterns and indicators



Hall indicator

Hall Lantern

### Mounting types

Surface mounted or Flush Mounted for all landing user interface

# Mix & Match

Couldn't find what you're looking for in one range? Don't worry, you're still free to mix and match materials and accessories from one range to another.

## Build smarter

Save time, make the right decisions, and plan your elevator car interior down to the very last detail with our KONE Studio tools.

Scan the QR code to try KONE Studio



Australia:  
[www.kone.com.au/studio/tool/](http://www.kone.com.au/studio/tool/)



New Zealand:  
[www.kone.co.nz/studio/tool/](http://www.kone.co.nz/studio/tool/)





## KDS330 - Built for today, ready for tomorrow

### Horizontal car operating panel (COP)



Horizontal COP (SEC keypad)



Horizontal COP (SEC & TTC keypad)

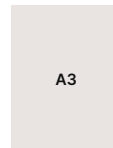


Horizontal COP (KDS floor button)

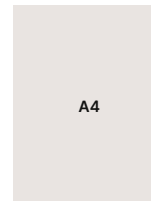
### KONE Tenant directory

The tenant directory is completely customisable and can be easily updated according to your needs.

Directories can be installed either vertically or horizontally.



TD1



TD2



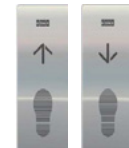
**Materials:** Brushed stainless steel base Tempered glass door Brushed or polished aluminium

### Mirrors



Wide-angle mirror

### Foot button



DB

# Accessibility for everyone

Our solutions are designed to improve flow within buildings for all users. When moving in and between buildings, even the smallest changes can greatly improve convenience.

For the latest product availability and estimated lead times, please contact your KONE sales representative. Additional lead time may apply for certain products.



# When durability matters

In tough environments like commercial or industrial premises, durable materials and accessories are essential to keep your elevator looking good and working reliably.

For the latest product availability and estimated lead times, please contact your KONE sales representative. Additional lead time may apply for certain products.

## Walls

### Corrosion-resistant steel



**A**  
316 grade  
stainless steel

## Floors

### Tear plate



**FE-1\***  
Zinc-coated steel



**AL\***  
Aluminium



**SS\***  
Stainless steel

## Doors

### Corrosion resistant steel



**A**  
316 grade stainless  
steel

## Ceilings

### Vandal-resistant (EN81-71 compliant) ceilings



**CL80V (EN81-71 compliant)\***  
Lighting: LED spot  
Finishing: ST4, PP10FT, MP1



**CL96V (EN81-71 compliant) \***  
Lighting: LED PCB  
Finishing: ST4, PP10FT

### Firefighter (EN81-72 compliant) ceilings



**CL80FFL (EN81-72 compliant)\*\***  
Lighting: LED spot  
Finishing: ST4



**CL80FFL (EN81-72 compliant) \*\***  
Lighting: LED spot  
Finishing: ST4

### Ceiling finishing



Silver (ST4)



Pure white  
(PP10FT)



Silver (MP1)

### Buffer rails



**BR2**  
ST4 - Silver



**BR2**  
ST4 - Silver

## KSS140 – Vandal-resistant

### COP



KSC143PH  
(partial height)  
KSC143FH  
(full height)

### Faceplate finishing



Asturias Satin (F)

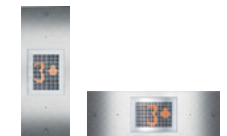


Scottish Quad (K)

### Mounting types

**COP:** Flush  
**Button:** Surface mounted

### Landing devices



KSI143



KSL140



# A window of opportunity

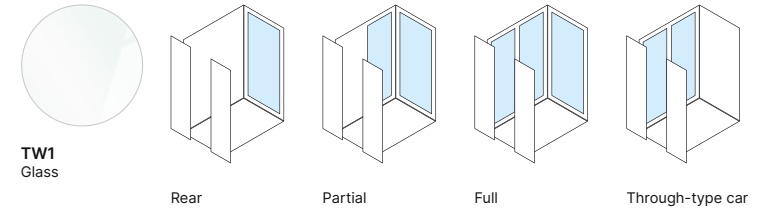
KONE Scenic elevator solutions combine proven technology and inspiring car designs to create elevators that are attractive and spacious, and which give you the opportunity to showcase your building.

Scenic elevators include glass car walls and a glass hoistway, and are used in a wide variety of environments, from office buildings, hotels, and retail centres to transportation hubs and cruise ships.

For the latest product availability and estimated lead times, please contact your KONE sales representative. Additional lead time may apply for certain products.

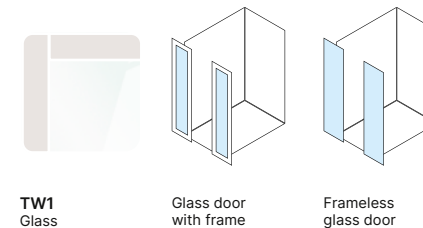
## Walls

### Transparent glass



## Doors

### Transparent glass

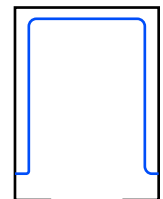
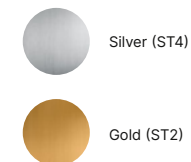


## Handrails



HR81 – HR81TR  
(EN81-70)  
ST4 Silver  
ST2 Gold

### Handrail finishing



HR81TR is a continuous handrail that extends around all three car walls.



# KONE Digital Experience Cars

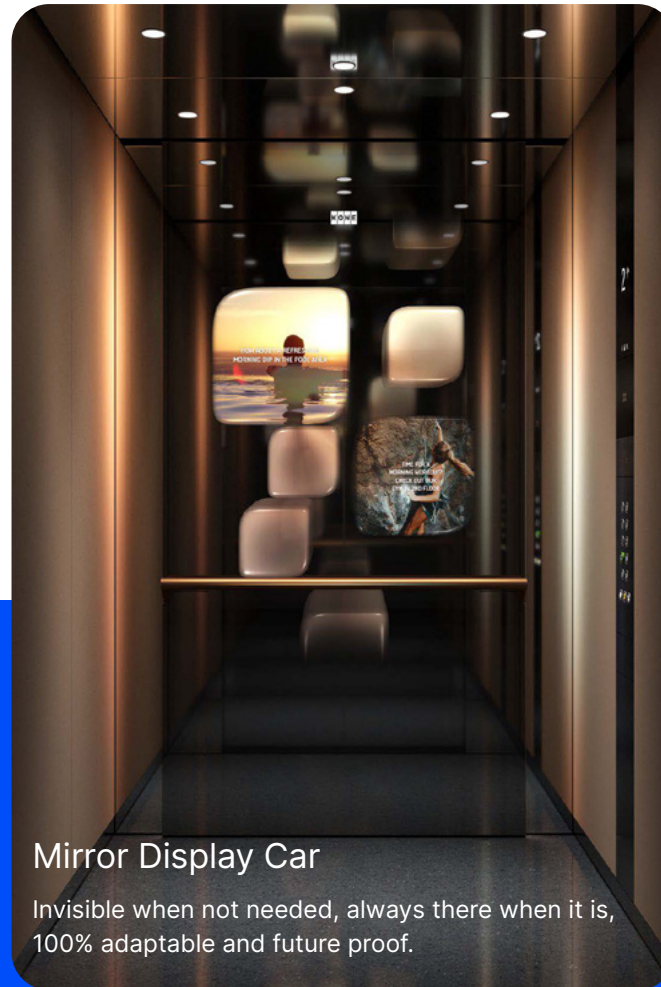
Sometimes the elevator ride  
is about more than the destination

Create a unique journey for people in your building by giving them a whole new world of multi-sensory experiences to enjoy. With dynamic sound, vivid colours, and immersive themes, the KONE Digital Experience Car can be tailored to capture your attention or soothe your senses.

Available through our Non-Standard Offering  
and additional lead time may be required



# Three types of KONE Digital Experience cars



Available through our Non-Standard Offering and additional lead time may be required



# KONE Lane

REINVENTING TURNSTILES

90%

MORE SPACE EFFICIENT



SAFE & FUTURE PROOF



AWARD-WINNING DESIGN

A	B	C	D	E	F
	32			15	
	4			14	
	2			12	
				10	

Available through our Non-Standard Offering and additional lead time may be required



# KONE Lane

## Key features

### OPTIMISED WAYFINDING WITH

- Destination guide display
- Audio guidance
- Traffic lights

### ENHANCE THE USER EXPERIENCE WITH

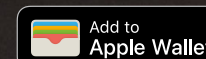
- Digitally adjustable LEDs
- Floor projections

### FLAG TAILGATING AND IDENTIFY OBJECTS WITH

- Time-of-flight (ToF) sensors

### SMOOTH AND SECURE ACCESS USING

- QR codes
- Wireless RFID
- Readiness for biometric apps and Apple wallet



Available through our Non-Standard Offering and additional lead time may be required

The images have been rendered by an artist. Details including shape and finish may differ from those pictured here.

# KONE Destination

A destination control solution that combines distinctive design, dynamic access, and intuitive guidance. People with similar destinations are grouped together in the same elevator to reduce overcrowding. This significantly increases convenience, reduces travel times, and allows for physical distancing.

- Advanced destination guidance
- Optimised and enhanced people flow
- Adaptive and user-friendly design
- Built-in connectivity for integrations and digital solutions
- Optimised energy consumption enabled by ADCS/Energy Management feature
- Readiness for Apple Wallet



KSP 1068  
DOP 10"



KST 1068  
Single DG



KST 1078  
Dual DG

WELCOME TO INNOHUB  
tap key for instant call



20 SPA & FITNESS CENTER



10 RESTAURANTS



3 CONFERENCE ROOMS



2 RETAIL







# KONE Destination – how it works

01

Select your destination on the destination operating panel or swipe your access card to make an elevator call to your home floor. Your allocated elevator is displayed.

02

If needed, check which elevator is yours from the digital destination guides on top of the elevators or from the elevator guide display.

03

Enjoy a ride in a non-crowded car and with fewer intermediate stops. The next-stop indicator on the media screen inside the elevator shows which floors it will stop at.

**AUSTRALIA** **www.kone.com.au****ACT**

Canberra and South West +61 2 6123 2600

**NSW**

Sydney +61 2 9577 7000

Newcastle and North Coast +61 2 4949 3333

**QLD**

Brisbane +61 7 3270 1811

Cairns +61 7 3270 1810

Gold Coast +61 7 3270 1810

Sunshine Coast +61 7 3270 1810

Townsville +61 7 3270 1810

**NT**

Darwin +61 7 3270 1810

**WA**

Perth +61 8 9270 9000

**SA**

Adelaide +61 8 8130 3800

**TAS**

Hobart +61 3 6231 2045

**VIC**

Melbourne +61 3 9934 8000

**NEW ZEALAND** **www.kone.co.nz****NTH**

Auckland +64 9 361 9000

Wellington +64 4 381 4330

**STH**

Christchurch +64 3 338 3900

Dunedin +64 3 477 5627



Want to know more?  
Contact your KONE  
representative today!  
**www.kone.com.au**  
**www.kone.co.nz**

This publication is for general informational purposes only and we reserve the right at any time to alter the product design and specifications. No statement this publication contains shall be construed as a warranty or condition, express or implied, as to any product, its fitness for any particular purpose, merchantability, quality or representation of the terms of any purchase agreement. Minor differences between printed and actual colours may exist. KONE MonoSpace® DX, KONE EcoDisc®, KONE Care® and People Flow® are registered trademarks of KONE Corporation. Copyright © 2025 KONE Corporation

November 2025

**Dedicated to  
People Flow™**