

# MATERIALS AND ACCESSORIES

KONE design collection

# CREATING THE PERFECT ELEVATOR

When it comes to creating a consistent look and feel throughout your building, elevators play a key role. By freely combining KONE's flexible and versatile selection of materials and accessories, you can create an elevator interior that matches your building's design perfectly.

## HOW TO CREATE YOUR CUSTOM ELEVATOR DESIGN

### 1 Choose the combination of wall, floor, and door material

Our wide range of available choices ensures that you can find the perfect combination to match your building's design, budget, and intended use requirements. For example, if durability and comfort are important, stone flooring is long-lasting and maintains its appearance even under heavy use, while coloured or wood laminate wall finishes help to create a warm ambience inside the car. For a more exclusive look and feel, our new patterned steel and 3D glass finishes can really make your elevator stand out.

### 2 Select your ceiling design

KONE offers a wide range of different ceiling designs, equipped with modern and innovative lighting solutions that help create just the right atmosphere inside the elevator. Our ceilings are designed to give the best possible lighting quality while avoiding glare, ensuring every elevator trip is a pleasant and safe one. KONE's lighting solutions are also energy efficient – our LED lights use 80% less energy than traditional halogen lights.

### 3 Choose your accessories

Our accessories are designed to increase convenience for passengers, and include options such as handrails, seats, car operating panels, information screens, and tenant directories. KONE accessories have been designed to meet the specific requirements of different users and building types. For example, we offer special graphics designed for car operating panels in senior housing and children's hospitals, as well as customisable solutions for office, hotel, and retail environments.

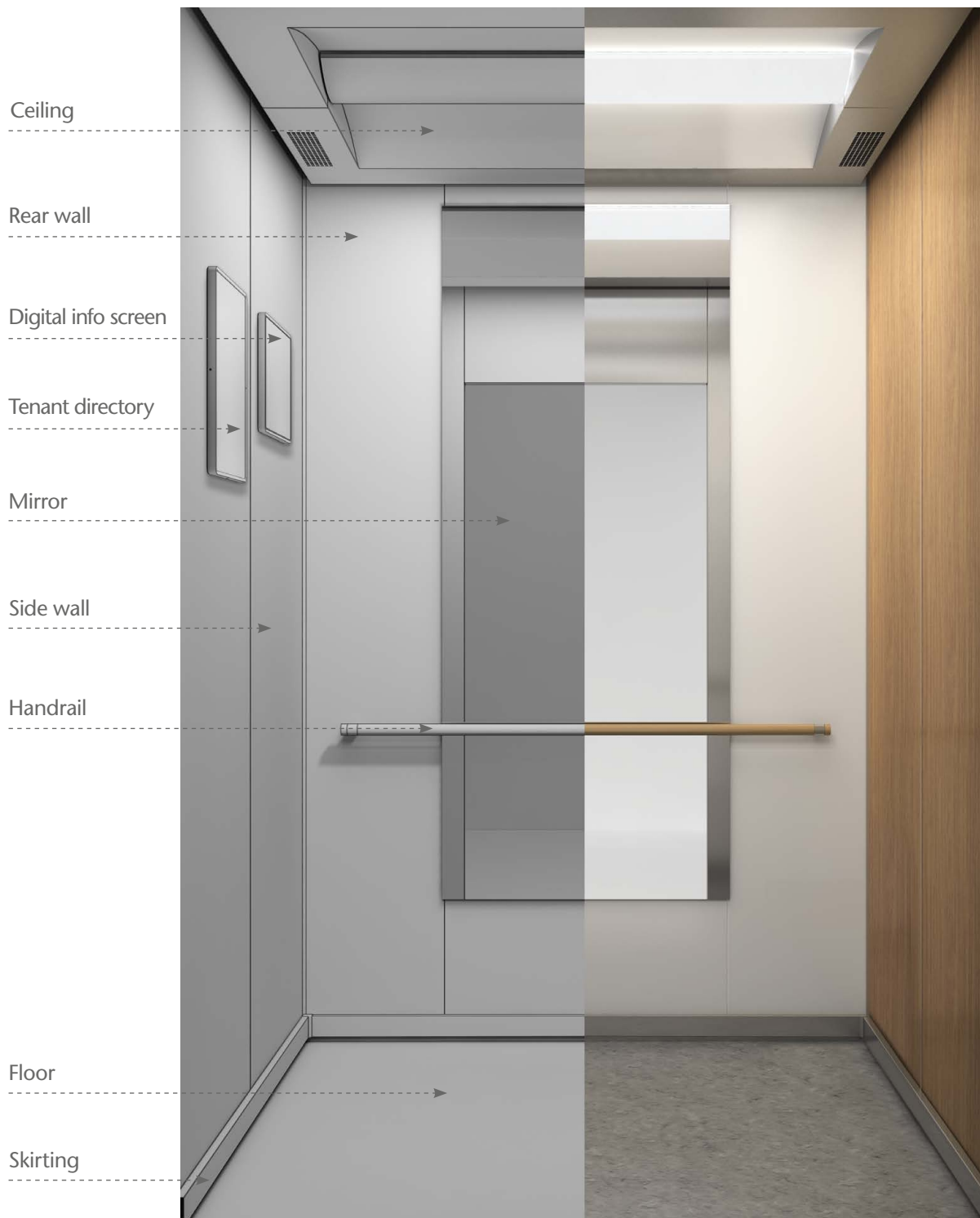
## MATERIALS AND ACCESSORIES FOR ALL PURPOSES

This catalog presents our complete selection of elevator car interior materials and accessories. The options are grouped into three categories: basic, standard, and premium. Premium materials and accessories have been created using exclusive materials and components.

For more design inspiration, take a look at the KONE Design Collection car interiors at [www.kone.com.au/elevators-lifts/design/](http://www.kone.com.au/elevators-lifts/design/). Consult your KONE sales contact to discuss your final interior selection and to get any additional information and support you may need.



## MIX & MATCH CAR ELEMENTS



# Accessories and materials

## CEILING



**CL71**

Lighting: T5 fluorescent tubes

Finishing: **PP10** White painted RAL9010

**ST4** Silver brushed stainless steel



**CL91**

Lighting: T5 fluorescent tubes

Finishing: **PP10** White painted RAL9010

**ST4** Silver brushed stainless steel

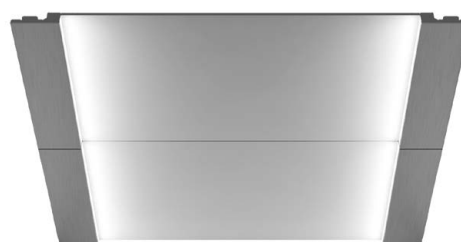


**CL94**

Lighting: T5 fluorescent tubes

Finishing: **PP10** White painted RAL9010

**ST4** Silver brushed stainless steel



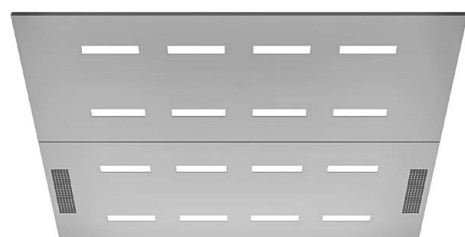
**CL95**

Lighting: T5 fluorescent tubes

Framing Finish: **ST4** Silver brushed stainless steel

**MP1** Silver mirror polished stainless steel

Centre Panel: **PP10** White painted RAL9010



**CL103**

Lighting: T5 fluorescent tubes

Finishing: **PP10** White painted RAL9010

**ST4** Silver brushed stainless steel



## HANDRAILS

### Aluminium



**HR31**

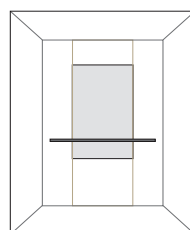
Round aluminium tube  
with black plastic end caps



**HR34**

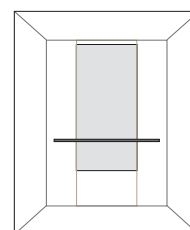
Round curved aluminium tube  
with black plastic end caps

## MIRRORS



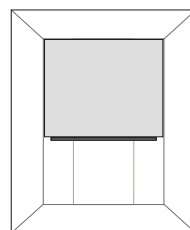
**MR1**

Partial width, partial height



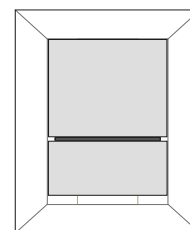
**MR1**

Partial width, medium height



**MR1**

Full width, partial height



**MR1**

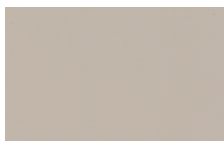
Full width, full height

## WALLS

## Painted steel



**PP18\***  
Linen Brown



**PP20\***  
Wool Grey

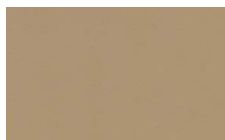


**PP21\***  
Sunny Orange

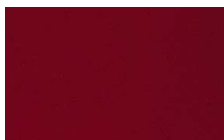


**PP22\***  
Fresh Green

## Metallic painted steel



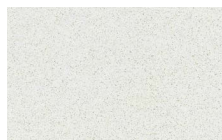
**METP1\***  
Champagne



**METP2\***  
Cosmo Red



**METP3\***  
Midnight Blue



**METP4\***  
Pearl White

## Brushed stainless steel



**F1\***  
Asturias Satin



**ST4\***  
Silver

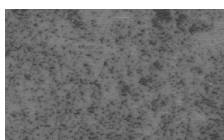
\* Available also for front wall

## FLOORS

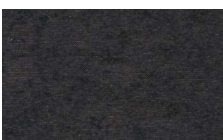
## PVC



**D24**  
Moon White



**D25**  
Rocky Grey



**D26**  
Lava Stone



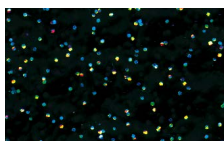
**D27**  
Saturn Brown



**D28**  
Jupiter Yellow



**D29**  
Mars Red



**D30**  
Galaxy



**D31**  
Bamboo

## Patterned PVC



**DG01**  
Brown



**DG02**  
Chessboard



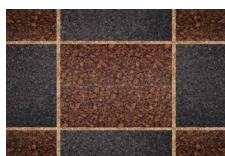
**DG03**  
Puzzle soft



**DG04**  
Puzzle bright



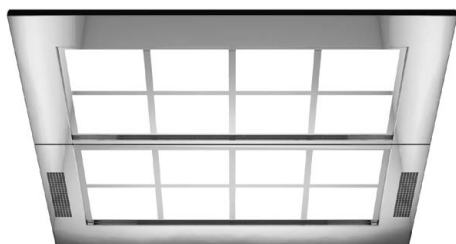
**DG05**  
Legno



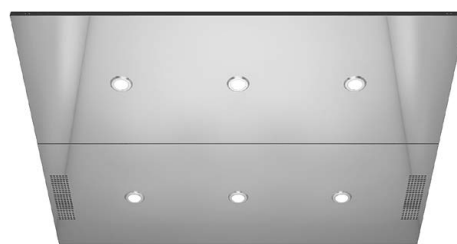
**DG06**  
Blusher

## Accessories

## CEILINGS

**CL70**

Lighting: T5 fluorescent tubes

Finishing: **ST4** Silver brushed stainless steel**MP1** Silver mirror polished stainless steel**CL88**

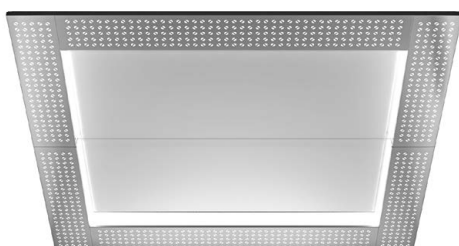
Lighting: LED round spot

Finishing: **ST4** Silver brushed stainless steel**MP1** Silver mirror polished stainless steel**MP2** Golden mirror polished stainless steel**CL97**

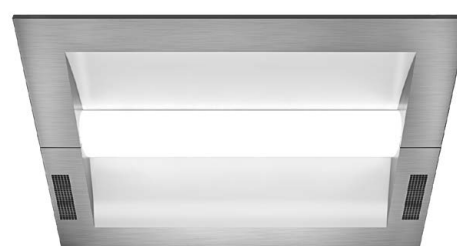
Lighting: LED square

Finishing: **ST4** Silver brushed stainless steel**MP1** Silver mirror polished stainless steel**MP2** Golden mirror polished stainless steel**CL191**

Lighting: LED spot and T5 fluorescent tubes

Finishing: **ST4** Silver brushed stainless steel**CL192**

Lighting: T5 fluorescent tubes

Finishing: **ST4** Silver brushed stainless steelCenter panel finishing: **PP10** White painted RAL9010**CL193**

Lighting: T5 fluorescent tubes

Finishing: **W** Textured film**METP** Metallic painted steel

## HANDRAILS

## Stainless Steel



**HR61**  
Round silver brushed



**HR61**  
Round golden mirror polished  
stainless steel



**HR64**  
Bended silver brushed  
EN81-70 compliant  
AS1735.12 compliant  
G compliant



**HR64**  
Bended golden mirror polished  
stainless steel

## Brushed stainless steel



**HR81**  
Self standing handrail  
Silver brushed



**HR81**  
Self standing handrail  
Golden brushed

## Wood



**HR71\*\***  
Round  
Light Wood with brushed  
stainless steel fixings (WLF)



**HR71\*\***  
Round  
Dark Wood with brushed  
stainless steel fixings (WDF)

\*\* Golden brushed stainless steel  
fixings also available

# Materials

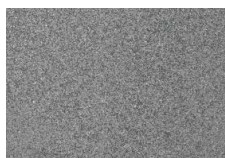
## WALLS

### Brushed stainless steel



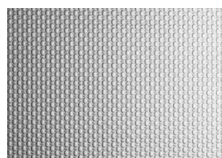
**ST2\***  
Golden

### Satin stainless steel



**MP6**  
Silver

### Textured stainless steel



**TS2**  
Flemish Linen

\* Available also for front wall

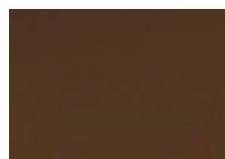
### Mirror polished stainless steel



**MP1\***  
Silver



**MP2\***  
Golden



**MP4**  
Copper



**MP5**  
Black

### Indirect steel



**ST21S**  
Silver

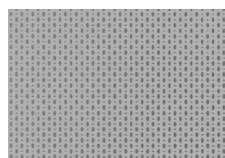


**ST21G**  
Golden

### Etched stainless steel



**ST26S**  
Silver Swing



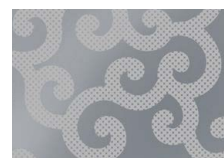
**ST28S**  
Silver Pop



**ST31S**  
Silver High-rise



**ST32S**  
Silver Pleat



**ST33S**  
Silver Curve



**ST34S**  
Silver Diamond



**ST35S**  
Silver Harmony



**ST36S**  
Silver Graphics



**ST37S**  
Silver Chain



**ST38S**  
Silver Ornament



**ST26G**  
Golden Swing



**ST28G**  
Golden Pop



**ST31G**  
Golden High-rise



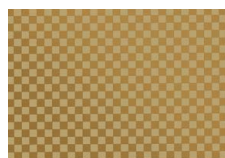
**ST32G**  
Golden Pleat



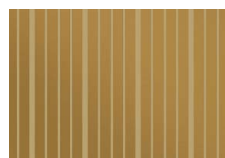
**ST33G**  
Golden Curve



**ST34G**  
Golden Diamond



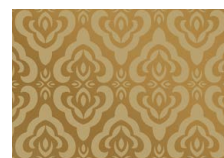
**ST35G**  
Golden Harmony



**ST36G**  
Golden Graphics



**ST37G**  
Golden Chain

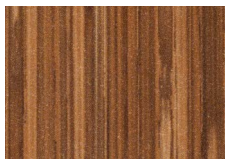


**ST38G**  
Golden Ornament

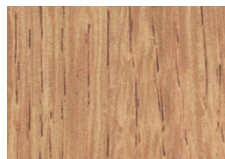


## WALLS

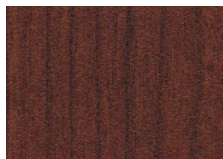
## Wood pattern laminate



**L88**  
Cane



**L89**  
Sand Oak

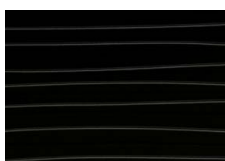


**L90**  
Cherry



**L91**  
Colorado White

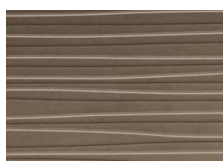
## 3D laminate



**L101**  
Black



**L102**  
Cream White



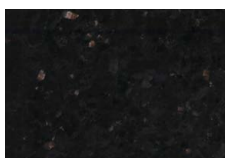
**L103**  
Cappuccino



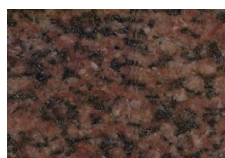
**L104**  
Strawberry Red

## FLOORS

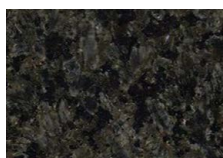
## Real stone



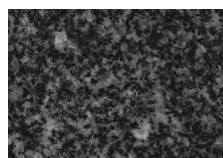
**M3R**  
Black Golden Sand



**G1R**  
Rose Black

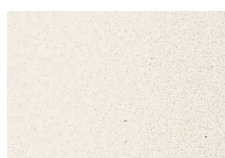


**G2R**  
Green Black



**G4R**  
Grey Black

## Artificial stone



**M4R**  
Natural White



**M5R**  
Pebble Grey



**M7R**  
Light Sand



**M8R**  
Shell White

# Accessories and materials

## CEILING



**CL151**

Lighting: LED panel

Finishing: **ST4** Silver brushed stainless steel

**MP1** Silver mirror polished stainless steel

**MP2** Golden mirror polished stainless steel

Diffuser finishing:



Satin



Geometric



Bamboo



**CL162**

Direct lighting: LED spot lighting

Indirect lighting: T5 fluorescent tubes

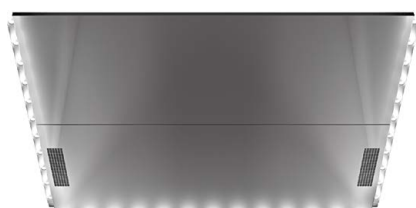
Suspending panel finishing:

**ST4** Silver brushed stainless steel

**MP1** Silver mirror polished stainless steel

**MP2** Golden mirror polished stainless steel

Back panel finishing: **PP10** White painted RAL9010



**CL181**

Lighting: LED tubes

Finishing: **MP1** Silver mirror polished stainless steel

**MP2** Golden mirror polished stainless steel

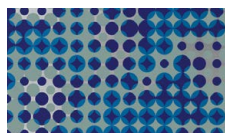
## WALLS

### Printed stainless steel



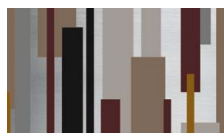
**PS5**

Radiant Bamboo



**PS6**

Hong-Kong Lights



**PS7**

Delicate Cool



**PS8**

Dot Cloud

### Patterned glass *(Only available for rear wall)*



**G5**

Silver Flow



**G6**

White diamond



**G8**

Blue Flow



**G10**

Magic Twist



**G11**

Classic Bamboo

### Glass *(Only available for rear wall)*



**G101**

Mirror Stripes



**G102**

Copper Mirror



**G103**

Ocean Blue



**G104**

Bronze



**G105**

Bright White



**G106**

Ruby Red

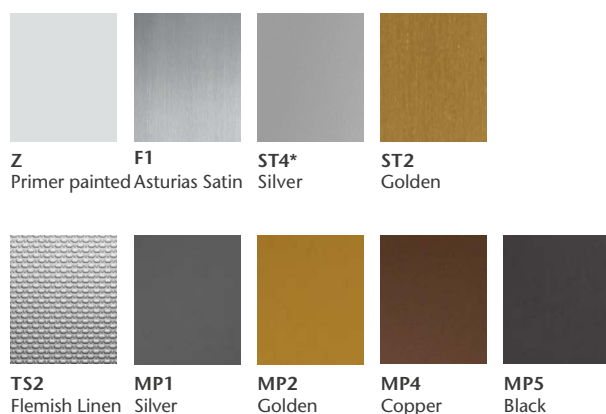


**G107**

Black Pearl

# Materials

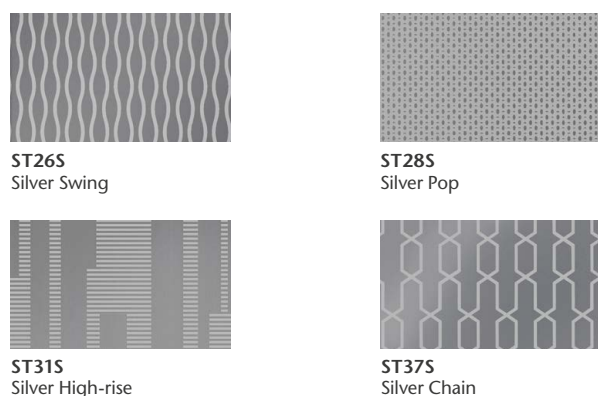
## Steel



## Painted steel



## Etched stainless steel

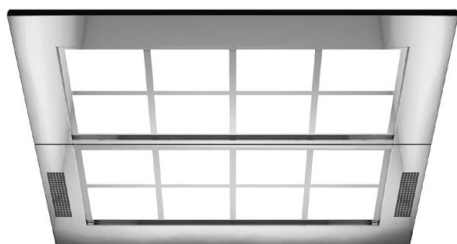


## Glass



# Accessories

## CEILING

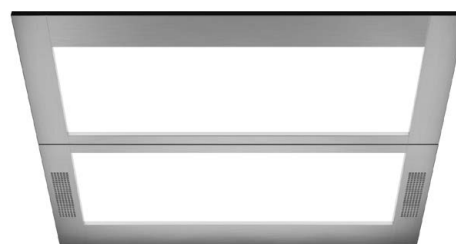


**CL70**

Lighting: T5 fluorescent tubes

Finishing: **ST4** Silver brushed stainless steel

**MP1** Silver mirror polished stainless steel

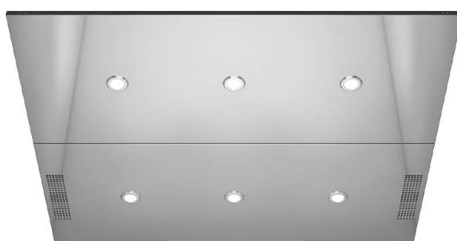


**CL71**

Lighting: T5 fluorescent tubes

Finishing: **PP10** White painted RAL9010

**ST4** Silver brushed stainless steel



**CL88**

Lighting: LED spot

Finishing: **ST4** Silver brushed stainless steel

**MP1** Silver mirror polished stainless steel

**MP2** Golden mirror polished stainless steel



**CL91**

Lighting: T5 fluorescent tubes

Finishing: **PP10** White painted RAL9010

**ST4** Silver brushed stainless steel

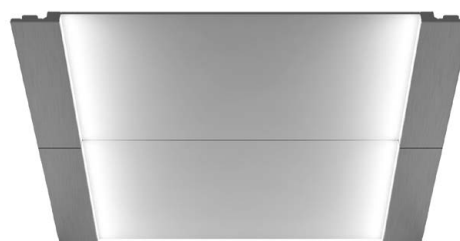


**CL94**

Lighting: T5 fluorescent tubes

Finishing: **PP10** White painted RAL9010

**ST4** Silver brushed stainless steel



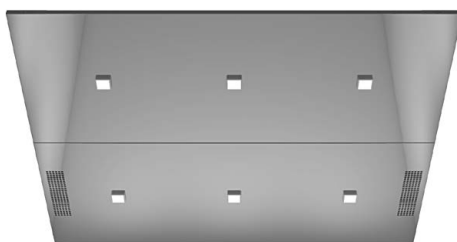
**CL95**

Lighting: T5 fluorescent tubes

Framing Finish: **ST4** Silver brushed stainless steel

**MP1** Silver mirror polished stainless steel

Centre Panel: **PP10** White painted RAL9010



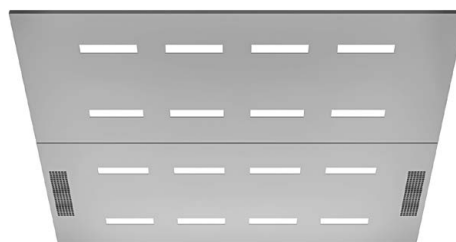
**CL97**

Lighting: LED square

Finishing: **ST4** Silver brushed stainless steel

**MP1** Silver mirror polished stainless steel

**MP2** Golden mirror polished stainless steel



**CL103**

Lighting: T5 fluorescent tubes

Finishing: **PP10** White painted RAL9010

**ST4** Silver brushed stainless steel





# Accessories

## CEILINGS



**CL151**

Lighting: LED panel

Finishing: **ST4** Silver brushed stainless steel

**MP2** Golden mirror polished stainless steel

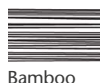
Diffuser finishing:



Satin



Geometric



Bamboo



**CL162**

Direct lighting: LED spot lighting

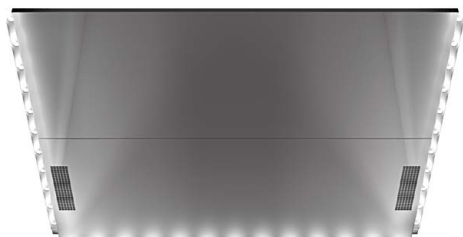
Indirect lighting: T5 fluorescent tubes

Suspending panel finishing:

**MP1** Silver mirror polished stainless steel

**MP2** Golden mirror polished stainless steel

Back panel finishing: **PP10** White painted RAL9010

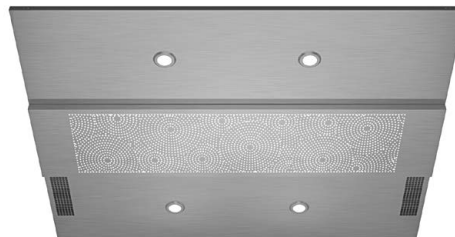


**CL181**

Lighting: LED tubes

Finishing: **MP1** Silver mirror polished stainless steel

**MP2** Golden mirror polished stainless steel



**CL191**

Lighting: LED spot and T5 fluorescent tubes  
in centre panel

Finishing: **ST4** Silver brushed stainless steel



**CL192**

Lighting: T5 fluorescent tubes

Finishing: **ST4** Silver brushed stainless steel

Center panel finishing: **PP10** White painted RAL9010

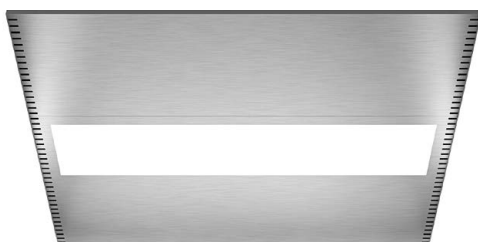


**CL193**

Lighting: T5 fluorescent tubes

Finishings: **W** Textured film

**METP** Metallic painted steel



**LF1**

Lighting: T5 fluorescent tubes

Finishing: **PP10** White painted RAL9010

For KONE Transys lifts only.

# Accessories

## HANDRAILS

### Aluminium



**HR31**  
Round aluminium tube  
with black plastic end caps



**HR34**  
Round curved aluminium tube  
with black plastic end caps

### Stainless Steel



**HR61**  
Round silver brushed



**HR61**  
Round golden mirror polished  
stainless steel



**HR64**  
Bended silver brushed  
EN81-70 compliant  
AS1735.12 compliant  
G compliant



**HR64**  
Bended golden mirror polished  
stainless steel

### Brushed stainless steel



**HR81**  
Self standing handrail  
Silver brushed



**HR81**  
Self standing handrail  
Golden brushed

### Wood



**HR71\*\***  
Round  
Light Wood with brushed  
stainless steel fixings (WLF)



**HR71\*\***  
Round  
Dark Wood with brushed  
stainless steel fixings (WDF)

\*\* Golden brushed stainless steel  
fixings also available

# Materials

## WALLS

### Painted steel



**PP18\***  
Linen Brown



**PP20\***  
Wool Grey



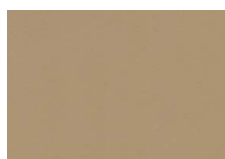
**PP21\***  
Sunny Orange



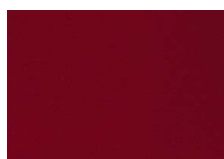
**PP22\***  
Fresh Green

\* Available for front wall

### Metallic painted steel



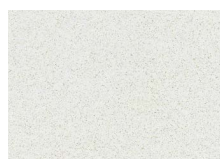
**METP1\***  
Champagne



**METP2\***  
Cosmo Red



**METP3\***  
Midnight Blue



**METP4\***  
Pearl White

### Brushed stainless steel



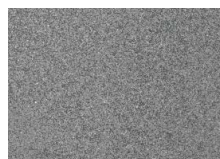
**ST4\***  
Silver



**ST2\***  
Golden



**F1\***  
Asturias Satin

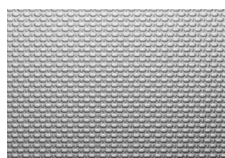


**MP6**  
Silver

### Scotch brite steel

### Satin stainless steel

### Textured stainless steel



**TS2**  
Flemish Linen

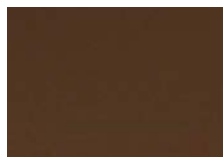
### Mirror polished stainless steel



**MP1\***  
Silver



**MP2\***  
Golden



**MP4**  
Copper

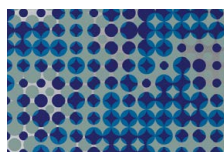


**MP5**  
Black

### Printed stainless steel



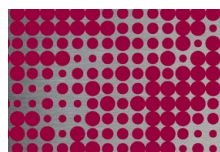
**PS5**  
Radiant Bamboo



**PS6**  
Hong-Kong Lights



**PS7**  
Delicate Cool



**PS8**  
Dot Cloud

# Materials

## WALLS

### Indirect steel



**ST21S**  
Silver

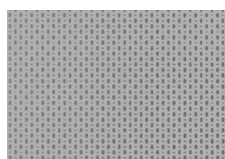


**ST21G**  
Gold

### Etched stainless steel



**ST26S**  
Silver Swing



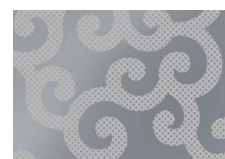
**ST28S**  
Silver Pop



**ST31S**  
Silver High-rise



**ST32S**  
Silver Pleat



**ST33S**  
Silver Curve



**ST34S**  
Silver Diamond



**ST35S**  
Silver Harmony



**ST36S**  
Silver Graphics



**ST37S**  
Silver Chain



**ST38S**  
Silver Ornament



**ST26G**  
Golden Swing



**ST28G**  
Golden Pop



**ST31G**  
Golden High-rise



**ST32G**  
Golden Pleat



**ST33G**  
Golden Curve



**ST34G**  
Golden Diamond



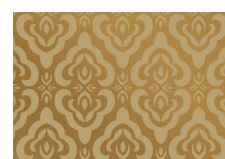
**ST35G**  
Golden Harmony



**ST36G**  
Golden Graphics

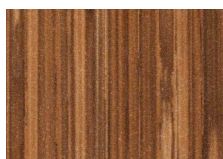


**ST37G**  
Golden Chain

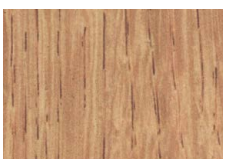


**ST38G**  
Golden Ornament

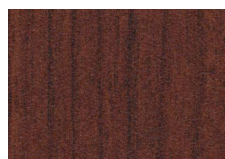
### Wood pattern laminate



**L88**  
Cane



**L89**  
Sand Oak



**L90**  
Cherry



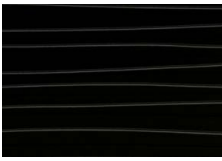
**L91**  
Colorado White



# Materials

## WALLS

### 3D laminate



**L101**  
Black



**L102**  
Cream White



**L103**  
Cappuccino



**L104**  
Strawberry Red

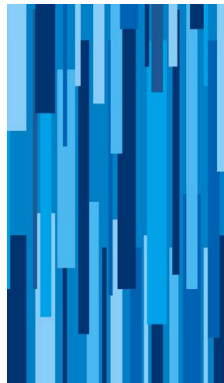
### Patterned glass



**G5**  
Silver Flow



**G6**  
White Diamond



**G8**  
Blue Flow

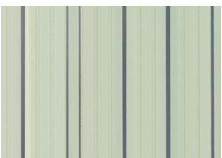


**G10**  
Magic Twist



**G11**  
Classic Bamboo

### Glass



**G101**  
Mirror Stripes



**G102**  
Copper Mirror



**G103**  
Ocean Blue



**G104**  
Bronze



**G105**  
Bright White



**G106**  
Ruby Red



**G107**  
Black Pearl

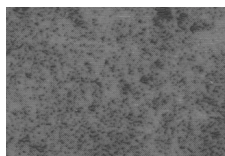
# Materials

## FLOORS

### PVC



**D24**  
Moon White



**D25**  
Rocky Grey



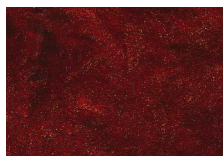
**D26**  
Lava Stone



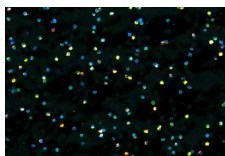
**D27**  
Saturn Brown



**D28**  
Jupiter Yellow



**D29**  
Mars Red



**D30**  
Galaxy



**D31**  
Bamboo

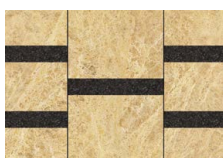
### Patterned PVC



**DG01**  
Brownly



**DG02**  
Chessboard



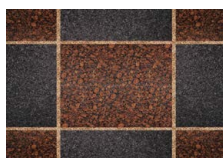
**DG03**  
Puzzle Soft



**DG04**  
Puzzle Bright

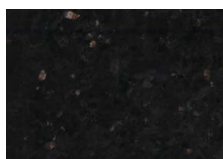


**DG05**  
Legno

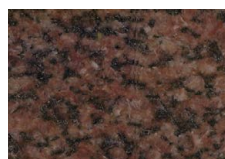


**DG06**  
Blusher

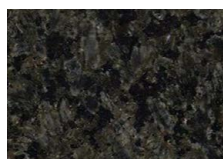
### Real stone



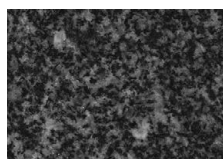
**M3R**  
Black Golden Sand



**G1R**  
Rose Black

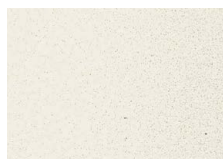


**G2R**  
Green Black



**G4R**  
Grey Black

### Artificial stone



**M4R**  
Natural White



**M5R**  
Pebble Grey

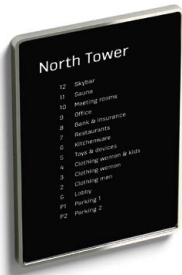


**M7R**  
Light Sand



**M8R**  
Shell White

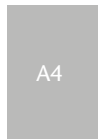
## TENANT DIRECTORY



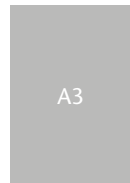
**TD1**  
Frame finishing: satin aluminum  
(only one finishing in SOC)

The printed tenant directory is completely customisable and can be easily updated according to the customer's needs.

### Sizes



**TD1**



**TD2**

Directories can be installed either vertically or horizontally.

## DIGITAL INFO SCREEN



**IS08**  
Standard version, 8.4" display **P**  
Surface mounted

**IS15**  
Premium version, 15" display **P**  
Surface mounted

Additional features may be available. Consult your sales representative for more information.

Frame finishing: satin or mirror polished stainless steel

## BUFFER RAILS



**BR1**  
Steel



**BR1**  
Wood

## SKIRTING

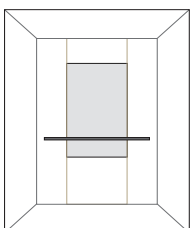


**ST4**  
Silver

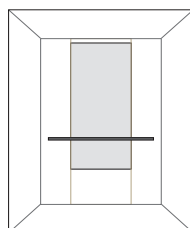


**ST2**  
Gold

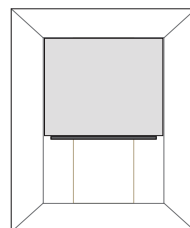
## MIRRORS



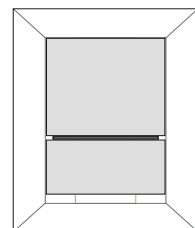
**MR1**  
Partial width, partial height



**MR1**  
Partial width, medium height



**MR1**  
Full width, partial height



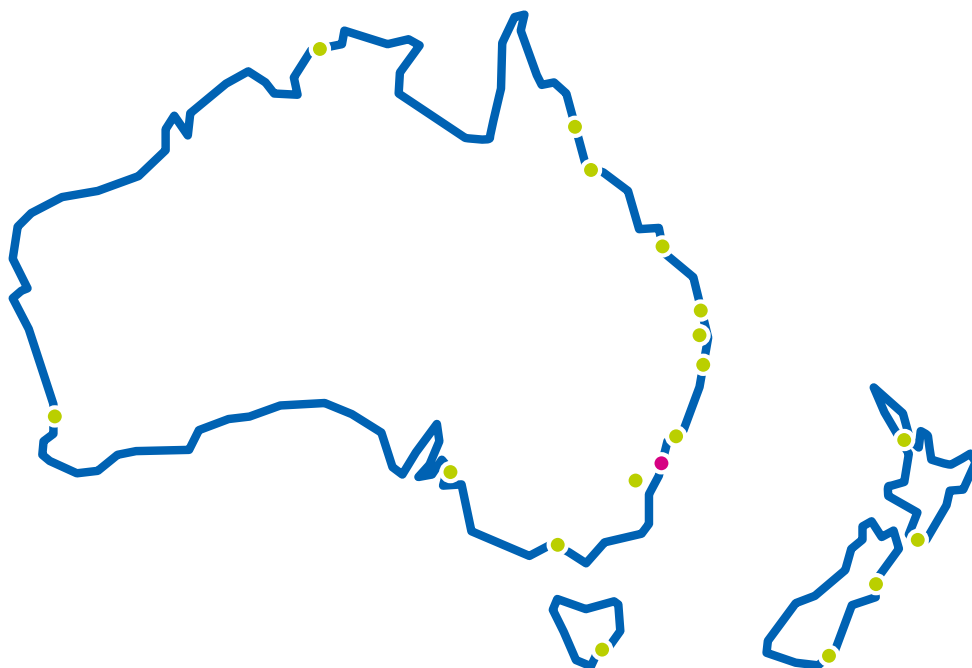
**MR1**  
Full width, full height

KONE provides innovative and eco-efficient solutions for elevators, escalators, automatic building doors and the systems that integrate them with today's intelligent buildings. We support our customers every step of the way; from design, manufacturing and installation to maintenance and modernisation.

KONE is a global leader in helping our customers manage the smooth flow of people and goods throughout their buildings. Our commitment to customers is present in all KONE solutions. This makes us a reliable partner throughout the life cycle of the building. We challenge the conventional wisdom of the industry.

We are fast, flexible, and we have a well-deserved reputation as a technology leader, with such innovations as KONE MonoSpace®, KONE NanoSpace™ and KONE UltraRope®.

KONE employs close to 50,000 dedicated experts to serve you globally and locally.



#### KONE OFFICES

##### AUSTRALIA

ACT	Canberra and South West	Ph +61 2 6123 2600
NSW	Sydney Newcastle and North Coast	Ph +61 2 9577 7000 Ph +61 2 4949 3333
QLD	Brisbane Cairns Gladstone Gold Coast Sunshine Coast Townsville	Ph +61 7 3270 1810 Ph +61 7 4044 0888 Ph +61 7 4978 1222 Ph +61 7 5510 2700 Ph +61 7 5493 7000 Ph +61 7 4779 4106
NT	Darwin	Ph +61 8 8941 4047
WA	Perth	Ph +61 8 9270 9000
SA	Adelaide	Ph +61 8 8130 3800
TAS	Hobart	Ph +61 3 6231 2045
VIC	Melbourne	Ph +61 3 9934 8000

[www.kone.com.au](http://www.kone.com.au)

##### NEW ZEALAND

NTH	Auckland Wellington	Ph +64 9 361 9000 Ph +64 4 381 4330
STH	Christchurch Dunedin	Ph +64 3 338 3900 Ph +64 3 477 5627

[www.kone.co.nz](http://www.kone.co.nz)